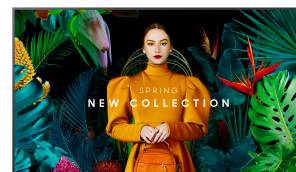


## Samsung QMC QM50C Digitale signage flatscreen 127 cm (50") LCD Wifi 500 cd/m<sup>2</sup> 4K Ultra HD Zwart Type processor Tizen 7.0 24/7



Merk : Samsung

Productfamilie: QMC

Artikelcode:  
LH50QMCEPGCXEN

Productnaam : QM50C

50", IPS, 4K UHD (3840 x 2160), 500 nit, 1200:1, 178/178, 8 ms, WiFi, Bluetooth, RJ-45, HDCP, HDMI, DP, RS232, AC 100-240V, 50/60Hz, 1124.1 x 644.8 x 28.5 mm, 11.8 kg

Samsung QMC QM50C Digitale signage flatscreen 127 cm (50") LCD Wifi 500 cd/m<sup>2</sup> 4K Ultra HD Zwart Type processor Tizen 7.0 24/7:

Samsung QMC QM50C. Productontwerp: Digitale signage flatscreen. Beeldscherm diagonaal: 127 cm (50"), Display technologie: LCD, Resolutie: 3840 x 2160 Pixels, Helderheid: 500 cd/m<sup>2</sup>, HD type: 4K Ultra HD. Wifi. Bedrijfsuren (uren/dagen): 24/7. Inclusief besturingssysteem: Tizen 7.0. Kleur van het product: Zwart



Beeldscherm		Design	
Soort paneel	IPS	Bezel breedte (onderkant)	1,15 cm
Beeldscherm diagonaal *	127 cm (50")	Bezel breedte (zijkant)	1,15 cm
Display technologie *	LCD	Bezel breedte (bovenkant)	1,15 cm
Resolutie *	3840 x 2160 Pixels	Randkleur	Charcoal Black
Helderheid *	500 cd/m <sup>2</sup>	Antireflectiescherm	✓
HD type *	4K Ultra HD		
Touchscreen *	✗		
Responstijd	8 ms		
Typische contrastverhouding	1200:1		
Marketingnaam dynamische contrastratio	Mega Contrast		
Kijkhoek, horizontaal	178°		
Kijkhoek, verticaal	178°		
Pixel pitch	0,285 x 0,285 mm		
Schermdiagonaal in centimeters	125 cm		
Frequentiebereik horizontaal	30 - 81 kHz		
Frequentiebereik verticaal	48 - 75 Hz		
Waasniveau	25 procent		
Pixelfrequentie (max)	594 MHz		
RGB-kleurruimte	NTSC		
Kleurbereik	72 procent		
Poorten & interfaces		Prestatie	
Aantal HDMI-poorten *	3	Bedoeld voor *	Universeel
HDMI versie	2.0	Bedrijfsuren (uren/dagen)	24/7
Aantal HDMI-invoerpoorten	3	HDCP	✓
DVI-poort *	✗	HDCP versie	2.2
Aantal DisplayPorts *	1		
DisplayPorts in	1		
DisplayPort versie	1.2		
USB-poort *	✓		
Aantal USB-aansluitingen	2		
Ethernet LAN *	✓		
Aantal Ethernet LAN (RJ-45)-poorten	1		
Wifi *	✓		
RS-232	✓		
Infrarood datapoort	✓		
		Energie	
		Stroomverbruik (typisch) *	132 W
		Slaapstand	0,5 W
		Energie-efficiëntieklasse (SDR)	G
		Energieverbruik (SDR) per 1000 uur	85 kWu
		AC-ingangsspanning	100 - 240 V
		AC-ingangsfrequentie	50/60 Hz
		Energie-efficiëntieschaal	A tot G
		Computersysteem	
		Computersysteem *	✓
		Computersysteemtype	System-on-Chip (SoC)
		Type processor *	✓
		Inclusief besturingssysteem	Tizen 7.0
		Gewicht en omvang	
		Schermbreedte	1124,1 mm
		Display diepte	28,5 mm
		Display hoogte	644,8 mm
		Display gewicht	11,8 kg
		Verpakking	
		Breedte verpakking	1246 mm
		Diepte verpakking	131 mm
		Hoogte verpakking	761 mm
		Gewicht verpakking	14,9 kg

Poorten & interfaces		Eisen aan de omgeving	
Remote (IR) ingang	1	Bedrijfstemperatuur (T-T)	0 - 40 °C
Design		Relatieve vochtigheid in bedrijf (V-V)	10 - 80 procent
Productontwerp *	Digitale signage flatscreen	Technische details	
Ondersteuning voor plaatsing *	Binnen	Audio uit (mini-jack)	1
Kleur van het product *	Zwart	Overige specificaties	
Beeldscherm vorm	Flat	Bluetooth	✓
VESA-montage *	✓	Flash memory	16000 MB
Paneelmontage-interface	200 x 200 mm	RS-232 ingangspoorten	1
		RS-232 uitgangspoorten	1
		RJ-45 invoer ports	1



8806095205021

Disclaimer. The information published here (the "Information") is based on sources that can be considered reliable, typically the manufacturer, but this Information is provided "AS IS" and without guarantee of correctness or completeness. The Information is only indicative and can be changed at any time without notification. No rights can be based on the Information. Suppliers or aggregators of this Information do not accept any liability with regard to the content of (web)pages and other documents, including its Information. The publisher of the Information can not be held liable for the content of 3rd party websites that are linking this Information or are linked to from this Information. You as the User of the Information are solely responsible for the choice and usage of this Information. You are not entitled to transfer, copy or otherwise multiply or distribute the Information. You are obliged to follow the directions of the copyright owner(s) with regard to the use of the Information. Exclusively Dutch law is applicable. With regard to price and stock data on the site, the publisher followed a number of starting points, which are not necessarily relevant for your private or business circumstances. Therefore, the price and stock data are only indicative and are subject to changes. You are personally responsible for the way you use and apply this information. As a user of the Information or sites or documents in which this Information is included, you will adhere to standard fair use including avoidance of spamming, ripping, intellectual-property violations, privacy violations, and any other illegal activity.

Publication date: 17-JUL-2024. Prints or copies of Information are only valid on the printed Publication date