

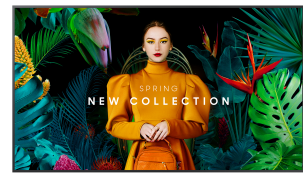
Samsung 75" Crystal UHD Signage QBC

Merk : Samsung

Productfamilie: QBC

Artikelcode:
LH75QBCBGCXEN

Productnaam : 75" Crystal UHD Signage QBC



75", VA, 4K UHD (3840 x 2160), 350 nit, 4000:1, 178/178, 8 ms, WiFi, Bluetooth, RJ-45, HDCP, HDMI, RS232, AC 100-240V, 50/60Hz, 1682.3 x 960.4 x 28.5 mm, 33.4 kg
 Samsung 75" Crystal UHD Signage QBC. Productontwerp: Digitale signage flatscreen.
 Beeldscherm diagonaal: 190,5 cm (75"), Display technologie: LCD, Resolutie: 3840 x 2160 Pixels, Helderheid: 350 cd/m², HD type: 4K Ultra HD. Wifi. Bedrijfsuren (uren/dagen): 16/7. Inclusief besturingssysteem: Tizen. Kleur van het product: Zwart

Beeldscherm		Design	
Soort paneel	VA	Randkleur	Charcoal Black
Beeldscherm diagonaal *	190,5 cm (75")	Montagewijze	Muur
Display technologie *	LCD	Prestatie	
Resolutie *	3840 x 2160 Pixels	Bedoeld voor *	Universeel
Helderheid *	350 cd/m ²	Bedrijfsuren (uren/dagen)	16/7
HD type *	4K Ultra HD	HDCP	✓
Touchscreen *	✗	HDCP versie	2.2
Responstijd	8 ms	Energie	
Typische contrastverhouding	4000:1	Stroomverbruik (typisch) *	214,5 W
Marketingnaam dynamische contrastratio	Mega Contrast	Slaapstand	0,5 W
Kijkhoek, horizontaal	178°	AC-ingangsspanning	100-240 V
Kijkhoek, verticaal	178°	AC-ingangsfrequentie	50-60 Hz
Pixel pitch	0,429 x 0,429 mm	Energie-efficiëntieschaal	A tot G
Frequentiebereik horizontaal	30 - 81 kHz	Computersysteem	
Frequentiebereik verticaal	48 - 75 Hz	Computersysteem *	✓
Waasniveau	2 procent	Computersysteemtype	System-on-Chip (SoC)
Pixelfrequentie (max)	594 MHz	Type processor *	✓
RGB-kleurruimte	NTSC	Inclusief besturingssysteem	Tizen
Poorten & interfaces		Operating systeem versie	7,0
Aantal HDMI-poorten *	3	Gewicht en omvang	
HDMI versie	2.0	Schermbreedte	1682,3 mm
Aantal HDMI-invoerpoorten	3	Display diepte	28,5 mm
DVI-poort *	✗	Display hoogte	960,4 mm
USB-poort *	✓	Display gewicht	33,4 kg
Aantal USB-aansluitingen	2	Verpakking	
Ethernet LAN *	✓	Breedte verpakking	1839 mm
Aantal Ethernet LAN (RJ-45)-poorten	1	Diepte verpakking	180 mm
Wifi *	✓	Hoogte verpakking	1113 mm
RS-232	✓	Gewicht verpakking	41,5 kg
Infrarood datapoort	✓	Eisen aan de omgeving	
Remote (IR) ingang	1	Bedrijfstemperatuur (T-T)	0 - 40 °C
Design		Relatieve vochtigheid in bedrijf (V-V)	10 - 80 procent
Productontwerp *	Digitale signage flatscreen	Certificaten	
Ondersteuning voor plaatsing *	Binnen	Certificering	Class B Class B60950-1, 62368-1
Kleur van het product *	Zwart		
Beeldscherm vorm	Flat		
VESA-montage *	✓		
Paneelmontage-interface	400 x 400 mm		

Design		Technische details	
Bezel breedte (onderkant)	1,34 cm	Audio uit (mini-jack)	1
Bezel breedte (zijkant)	1,34 cm	Overige specificaties	
Bezel breedte (bovenkant)	1,34 cm	Bluetooth	✓
		Flash memory	8000 MB
		RS-232 ingangspoorten	1
		RS-232 uitgangspoorten	1
		RJ-45 invoer ports	1
		Optionele functies	WMN-B50SC STN-L6585C



8806094973952

Disclaimer. The information published here (the "Information") is based on sources that can be considered reliable, typically the manufacturer, but this Information is provided "AS IS" and without guarantee of correctness or completeness. The Information is only indicative and can be changed at any time without notification. No rights can be based on the Information. Suppliers or aggregators of this Information do not accept any liability with regard to the content of (web)pages and other documents, including its Information. The publisher of the Information can not be held liable for the content of 3rd party websites that are linking this Information or are linked to from this Information. You as the User of the Information are solely responsible for the choice and usage of this Information. You are not entitled to transfer, copy or otherwise multiply or distribute the Information. You are obliged to follow the directions of the copyright owner(s) with regard to the use of the Information. Exclusively Dutch law is applicable. With regard to price and stock data on the site, the publisher followed a number of starting points, which are not necessarily relevant for your private or business circumstances. Therefore, the price and stock data are only indicative and are subject to changes. You are personally responsible for the way you use and apply this information. As a user of the Information or sites or documents in which this Information is included, you will adhere to standard fair use including avoidance of spamming, ripping, intellectual-property violations, privacy violations, and any other illegal activity.

Publication date: 07-OCT-2024. Prints or copies of Information are only valid on the printed Publication date