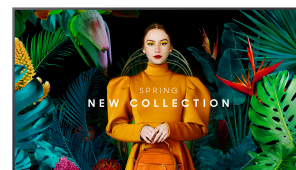


Samsung QBC QB85C Digitale signage flatscreen 2,15 m (84.5") LCD Wifi 350 cd/m² 4K Ultra HD Zwart Type processor Tizen 7.0 16/7



Merk : Samsung

Productfamilie: QBC

Artikelcode:
LH85QBCEBGCXEN

Productnaam : QB85C

84.5", VA, 4K UHD (3840 x 2160), 350 nit, 4000:1, 178/178, 10 ms, WiFi, Bluetooth, RJ-45, HDCP, HDMI, RS232, AC 100-240V, 50/60Hz, 1904.3 x 1085.3 x 28.5 mm, 41.9 kg

Samsung QBC QB85C. Productontwerp: Digitale signage flatscreen. Beeldscherm diagonaal: 2,15 m (84.5"), Display technologie: LCD, Resolutie: 3840 x 2160 Pixels, Helderheid: 350 cd/m², HD type: 4K Ultra HD. Wifi. Bedrijfsuren (uren/dagen): 16/7. Inclusief besturingssysteem: Tizen 7.0. Kleur van het product: Zwart

Beeldscherm		Design	
Soort paneel	VA	Bezel breedte (zijkant)	1,39 cm
Beeldscherm diagonaal *	2,15 m (84.5")	Bezel breedte (bovenkant)	1,39 cm
Display technologie *	LCD	Randkleur	Charcoal Black
Resolutie *	3840 x 2160 Pixels	Montagewijze	Muur
Helderheid *	350 cd/m ²	Prestatie	
HD type *	4K Ultra HD	Bedoeld voor *	Universeel
Touchscreen *	✗	Bedrijfsuren (uren/dagen)	16/7
Responstijd	10 ms	HDCP	✓
Typische contrastverhouding	4000:1	HDCP versie	2.2
Marketingnaam dynamische contrastratio	Mega Contrast	Energie	
Kijkhoek, horizontaal	178°	Stroomverbruik (typisch) *	231 W
Kijkhoek, verticaal	178°	Slaapstand	0,5 W
Pixel pitch	0,487 x 0,487 mm	AC-ingangsspanning	100-240 V
Frequentiebereik horizontaal	30 - 81 kHz	AC-ingangsfrequentie	50-60 Hz
Frequentiebereik verticaal	48 - 75 Hz	Energie-efficiëntieschaal	A tot G
Waasniveau	2 procent	Computersysteem	
Pixelfrequentie (max)	594 MHz	Computersysteem *	✓
RGB-kleurruimte	NTSC	Computersysteemtype	System-on-Chip (SoC)
Poorten & interfaces		Type processor *	✓
Aantal HDMI-poorten *	3	Inclusief besturingssysteem	Tizen 7.0
HDMI versie	2.0	Gewicht en omvang	
Aantal HDMI-invoerpoorten	3	Schermbreedte	1904,3 mm
DVI-poort *	✗	Display diepte	28,5 mm
USB-poort *	✓	Display hoogte	1085,3 mm
Aantal USB-aansluitingen	2	Display gewicht	41,9 kg
Ethernet LAN *	✓	Verpakking	
Aantal Ethernet LAN (RJ-45)-poorten	1	Breedte verpakking	2077 mm
Wifi *	✓	Diepte verpakking	210 mm
RS-232	✓	Hoogte verpakking	1222 mm
Infrarood datapoort	✓	Gewicht verpakking	53,9 kg
Remote (IR) ingang	1	Eisen aan de omgeving	
Design		Bedrijfstemperatuur (T-T)	0 - 40 °C
Productontwerp *	Digitale signage flatscreen	Relatieve vochtigheid in bedrijf (V-V)	10 - 80 procent
Ondersteuning voor plaatsing *	Binnen	Technische details	
Kleur van het product *	Zwart	Audio uit (mini-jack)	1
Beeldscherm vorm	Flat		
VESA-montage *	✓		
Paneelmontage-interface	600 x 400 mm		

Design		Overige specificaties	
Bezel breedte (onderkant)	1,39 cm	Flash memory	8000 MB
		RS-232 ingangspoorten	1
		RS-232 uitgangspoorten	1
		RJ-45 invoer ports	1
		Optionele functies	WMN-B50SC STN-L6585C



8806094973983

Disclaimer. The information published here (the "Information") is based on sources that can be considered reliable, typically the manufacturer, but this Information is provided "AS IS" and without guarantee of correctness or completeness. The Information is only indicative and can be changed at any time without notification. No rights can be based on the Information. Suppliers or aggregators of this Information do not accept any liability with regard to the content of (web)pages and other documents, including its Information. The publisher of the Information can not be held liable for the content of 3rd party websites that are linking this Information or are linked to from this Information. You as the User of the Information are solely responsible for the choice and usage of this Information. You are not entitled to transfer, copy or otherwise multiply or distribute the Information. You are obliged to follow the directions of the copyright owner(s) with regard to the use of the Information. Exclusively Dutch law is applicable. With regard to price and stock data on the site, the publisher followed a number of starting points, which are not necessarily relevant for your private or business circumstances. Therefore, the price and stock data are only indicative and are subject to changes. You are personally responsible for the way you use and apply this information. As a user of the Information or sites or documents in which this Information is included, you will adhere to standard fair use including avoidance of spamming, ripping, intellectual-property violations, privacy violations, and any other illegal activity.

Publication date: 29-JUN-2024. Prints or copies of Information are only valid on the printed Publication date