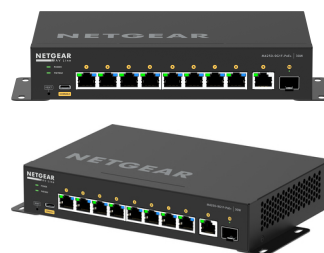


## NETGEAR GSM4210PD-100EUS netwerk-switch Managed L2/L3 Gigabit Ethernet (10/100/1000) Power over Ethernet (PoE) Zwart



**Merk :** NETGEAR

**Artikelcode:** GSM4210PD-100EUS

**Productnaam :** GSM4210PD-100EUS

NETGEAR GSM4210PD-100EUS. Switch type: Managed, Switch-laag: L2/L3. Type basis-switching RJ-45 Ethernet-poorten: Gigabit Ethernet (10/100/1000), Aantal basis-switching RJ-45 Ethernet-poorten: 8. Full duplex. MAC-adrestabel: 16000 entries, Switchingcapaciteit: 24 Gbit/s. Netwerkstandaard: IEEE 802.1D, IEEE 802.1Q, IEEE 802.1ab, IEEE 802.1s, IEEE 802.1w, IEEE 802.1x, IEEE 802.3ad, IEEE.... Power over Ethernet (PoE). Rack-montage

Beheerfuncties		Prestatie	
Switch type *	Managed	Type processor	✓
Switch-laag	L2/L3	Processormodel	ARM Cortex-A9
Quality of Service (QoS)	✓	Frequentie van processor	1250 MHz
Poorten & interfaces		Intern geheugen	2048 MB
Aantal basis-switching RJ-45 Ethernet-poorten *	8	Geluidsniveau	30,06 dB
Type basis-switching RJ-45 Ethernet-poorten *	Gigabit Ethernet (10/100/1000)	Energie	
Netwerk		Stroombron *	AC/DC
Netwerkstandaard *	IEEE 802.1D, IEEE 802.1Q, IEEE 802.1ab, IEEE 802.1s, IEEE 802.1w, IEEE 802.1x, IEEE 802.3ad, IEEE 802.3af, IEEE 802.3at, IEEE 802.3bt, IEEE 802.3x	Vermogenstoevoer inclusief *	✓
Full duplex	✓	AC-ingangsspanning	220 - 240 V
Verbindingsaggregatie	✓	AC-ingangsfrequentie	50 - 60 Hz
Broadcast stormbeheer	✓	Power over Ethernet (PoE)	
Rate limiting	✓	Power over Ethernet (PoE) *	✓
Spanning tree protocol	✓	Aantal Power over Ethernet plus (PoE +)-poorten	8
Data-uitwisseling		Vermogen per poort Power over Ethernet (PoE)	30 W
Switchingcapaciteit *	24 Gbit/s	Totaal Power over Ethernet (PoE)-budget	110 W
MAC-adrestabel *	16000 entries	Eisen aan de omgeving	
Store-and-forward	✓	Bedrijfstemperatuur (T-T)	0 - 50 °C
Beveiliging		Temperatuur bij opslag	-20 - 70 °C
DHCP-functies	DHCP Option 82, DHCP relay, DHCP server, DHCP snooping, DHCPv6 client, DHCPv6 relay, DHCPv6 server, DHCPv6 snooping	Relatieve vochtigheid in bedrijf (V-V)	0 - 90 procent
Access Control List (ACL)	✓	Luchtvochtigheid bij opslag	0 - 95 procent
IGMP snooping	✓	Hoogte, in bedrijf	0 - 3000 m
SSH/SSL support	✓	Hoogte bij opslag	0 - 3000 m
Bescherming lus	✓	Warmtedissipatie	559,555 BTU/h
BPDU filtering / bescherming	✓	Gewicht en omvang	
Authenticatie	MAC-gebaseerde authenticatie	Breedte	210 mm
Authenticatie type	RADIUS	Diepte	140 mm
Multicast-functies		Hoogte	40 mm
Multicast-ondersteuning	✓	Gewicht	967 g
IPv4-multicast-vermeldingen	2000	Verpakking	
Design		Gebruiksaanwijzing	✓
Rack-montage *	✓	Gebruikershandleiding	✓
Kleur van het product	Zwart		
LED-indicatoren	Power over Ethernet (PoE), Stroom, Status		



0606449160192



606449160192

Disclaimer. The information published here (the "Information") is based on sources that can be considered reliable, typically the manufacturer, but this Information is provided "AS IS" and without guarantee of correctness or completeness. The Information is only indicative and can be changed at any time without notification. No rights can be based on the Information. Suppliers or aggregators of this Information do not accept any liability with regard to the content of (web)pages and other documents, including its Information. The publisher of the Information can not be held liable for the content of 3rd party websites that are linking this Information or are linked to from this Information. You as the User of the Information are solely responsible for the choice and usage of this Information. You are not entitled to transfer, copy or otherwise multiply or distribute the Information. You are obliged to follow the directions of the copyright owner(s) with regard to the use of the Information. Exclusively Dutch law is applicable. With regard to price and stock data on the site, the publisher followed a number of starting points, which are not necessarily relevant for your private or business circumstances. Therefore, the price and stock data are only indicative and are subject to changes. You are personally responsible for the way you use and apply this information. As a user of the Information or sites or documents in which this Information is included, you will adhere to standard fair use including avoidance of spamming, ripping, intellectual-property violations, privacy violations, and any other illegal activity.

Publication date: 26-AUG-2024. Prints or copies of Information are only valid on the printed Publication date