

## StarTech.com Cable de Red 91cm Categoría Cat6 UTP RJ45 Gigabit Ethernet ETL - Patch Moldeado - Amarillo

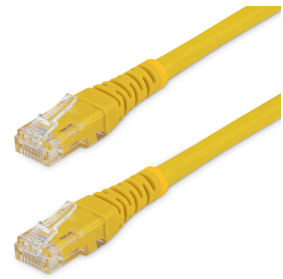
**Marca :** StarTech.com

**Código del producto:** C6PATCH3YL

**Nombre del producto :** Cable de Red 91cm Categoría Cat6 UTP RJ45 Gigabit Ethernet ETL - Patch Moldeado - Amarillo

StarTech.com Cable de Red 91cm Categoría Cat6 UTP RJ45 Gigabit Ethernet Certificado ETL - Patch Moldeado - Amarillo

StarTech.com Cable de Red 91cm Categoría Cat6 UTP RJ45 Gigabit Ethernet ETL - Patch Moldeado - Amarillo. Longitud de cable: 0.91 m, Cable estándar: Cat6, Blindaje de cable: U/UTP (UTP), Conector 1: RJ-45, Conector 2: RJ-45, Contactos del conector chapado: Oro, Velocidad de transferencia de datos: 1000 Mbit/s, Color del producto: Amarillo



Características		Características	
Color del producto *	Amarillo	Energía sobre Ethernet (PoE)	✓
Longitud de cable *	0.91 m	Cable con conector moldeado	✓
Cable estándar *	Cat6	Conectar y usar (Plug and Play)	✓
Blindaje de cable *	U/UTP (UTP)	Certificación	CE, ETL, REACH
Conector 1 *	RJ-45	<b>Peso y dimensiones</b>	
Conector 2 *	RJ-45	Peso	55 g
Género del conector 1 *	Macho	<b>Empaquetado de datos</b>	
Género del conector 2 *	Macho	Cantidad por paquete	1 pieza(s)
Contactos del conector chapado	Oro	Ancho del paquete	10 mm
Material de chaqueta	Cloruro de polivinilo (PVC)	Largo del paquete	199 mm
Tipo de conductor	Trenzado	Alto del paquete	211 mm
Material del conductor	Cobre	Peso del paquete	55 g
clasificación del cable	CMG (CM)	<b>Detalles técnicos</b>	
Tecnología de cableado	10/100/1000Base-T(X)	Certificados de cumplimiento	RoHS
Tipo de interfaz ethernet	Gigabit Ethernet	<b>Datos de logística</b>	
AWG calibre del cable	24	Largo de la caja principal	360 mm
Velocidad de transferencia de datos	1000 Mbit/s	Longitud de la caja principal	400 mm
Frecuencia	650 MHz	Alto de la caja principal	255 mm
		Cantidad por caja principal	180 pieza(s)



0065030794824



065030794824

Disclaimer. The information published here (the "Information") is based on sources that can be considered reliable, typically the manufacturer, but this Information is provided "AS IS" and without guarantee of correctness or completeness. The Information is only indicative and can be changed at any time without notification. No rights can be based on the Information. Suppliers or aggregators of this Information do not accept any liability with regard to the content of (web)pages and other documents, including its Information. The publisher of the Information can not be held liable for the content of 3rd party websites that are linking this Information or are linked to from this Information. You as the User of the Information are solely responsible for the choice and usage of this Information. You are not entitled to transfer, copy or otherwise multiply or distribute the Information. You are obliged to follow the directions of the copyright owner(s) with regard to the use of the Information. Exclusively Dutch law is applicable. With regard to price and stock data on the site, the publisher followed a number of starting points, which are not necessarily relevant for your private or business circumstances. Therefore, the price and stock data are only indicative and are subject to changes. You are personally responsible for the way you use and apply this information. As a user of the Information or sites or documents in which this Information is included, you will adhere to standard fair use including avoidance of spamming, ripping, intellectual-property violations, privacy violations, and any other illegal activity.

Publication date: 23-AUG-2024. Prints or copies of Information are only valid on the printed Publication date