

Epson C13T671600 kit para impresora

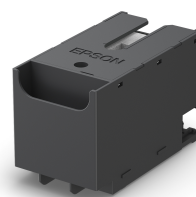
Marca : Epson

Código del producto: C13T671600

Nombre del producto : Maintenance box

Maintenance box

Epson C13T671600. Color del producto: Negro, País de origen: Indonesia, Compatibilidad de marca: Epson. Cantidad por paquete: 1 pieza(s), Peso del paquete: 0.18 g, Ancho del paquete: 81 mm. Cantidad por tarima: 1050 pieza(s), Cantidad por tarima (Reino Unido): 1050 pieza(s), Cantidad por caja principal: 50 pieza(s)



Características		Empaquetado de datos	
Color del producto	Negro	Ancho del paquete	81 mm
País de origen	Indonesia	Largo del paquete	183 mm
Compatibilidad de marca	Epson	Alto del paquete	73 mm
Compatibilidad	- WorkForce Pro WF-M5799DWF -	Datos de logística	
	WorkForce Pro WF-M5299DW -	Cantidad por tarima	1050 pieza(s)
	WorkForce Pro WF-C5790DWF -	Código de Sistema de Armonización (SA)	84439990
	WorkForce Pro WF-C5710DWF -	Cantidad por tarima (Reino Unido)	1050 pieza(s)
	WorkForce Pro WF-C5290DW -	Cantidad por caja principal	50 pieza(s)
WorkForce Pro WF-C5210DW			
Empaquetado de datos			
Cantidad por paquete	1 pieza(s)		
Peso del paquete	0.18 g		



8715946634951



4988617288331



0010343938724



010343938724



9314020627774

Disclaimer. The information published here (the "Information") is based on sources that can be considered reliable, typically the manufacturer, but this Information is provided "AS IS" and without guarantee of correctness or completeness. The Information is only indicative and can be changed at any time without notification. No rights can be based on the Information. Suppliers or aggregators of this Information do not accept any liability with regard to the content of (web)pages and other documents, including its Information. The publisher of the Information can not be held liable for the content of 3rd party websites that are linking this Information or are linked to from this Information. You as the User of the Information are solely responsible for the choice and usage of this Information. You are not entitled to transfer, copy or otherwise multiply or distribute the Information. You are obliged to follow the directions of the copyright owner(s) with regard to the use of the Information. Exclusively Dutch law is applicable. With regard to price and stock data on the site, the publisher followed a number of starting points, which are not necessarily relevant for your private or business circumstances. Therefore, the price and stock data are only indicative and are subject to changes. You are personally responsible for the way you use and apply this information. As a user of the Information or sites or documents in which this Information is included, you will adhere to standard fair use including avoidance of spamming, ripping, intellectual-property violations, privacy violations, and any other illegal activity.