

Intellinet 507950 tarjeta de red Interno Ethernet 10000 Mbit/s

Marca : Intellinet

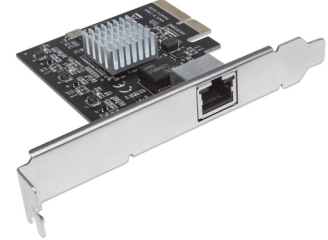
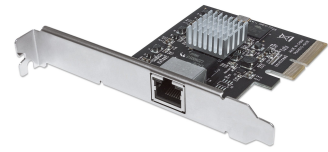
Código del producto: 507950

Nombre del producto : 507950

- Crea la conexión ideal desde un servidor o estación de trabajo de alta gama a la red
- Tasa de transferencia de datos de hasta 10 Gbps con un cable de red Cat6a
- Provee una tasa de transferencia de datos de hasta 5 Gbps con cable de red Cat6 o de 2.5 Gbps con cable de red Cat5e
- Cumplimiento total de las especificaciones 10GBASE-T y NBASE-T™
- Retrocompatible con redes Gigabit y Fast Ethernet tradicionales
- Tecnología de ahorro de energía Ethernet de Eficiencia de Energía (IEEE 802.3az)
- Soporta jumbo frames de hasta 16 kBytes (Super Jumbo Frames)
- Soporta IP, TCP y UDP Checksum Offload
- Conexión VLAN (IEEE 802.1Q)
- Soporta especificaciones PCI Express Rev 2.0
- Soporta Windows®, Mac OS® y Linux®
- Soporta Auto-negociación NWAY
- Soporta Auto-MDIX
- Incluye bracket corto de 8 cm

1 puerto PCI Express 2.0, 10GBASE-T, 5GBASE-T, 2.5GBASE-T

Intellinet 507950. Interno. Tecnología de conectividad: Alámbrico, Interfaz de host: PCI Express, Interfaz: Ethernet. Rango máximo de transferencia de datos: 10000 Mbit/s



Puertos e Interfaces		Requisitos del sistema	
Tecnología de conectividad *	Alámbrico	Sistemas operativos de servidor soportados	Windows Server 2008 R2, Windows Server 2012, Windows Server 2012 R2, Windows Server 2016
Interfaz de host *	PCI Express	Condiciones ambientales	
Interfaz *	Ethernet	Intervalo de temperatura operativa (T-T)	0 - 50 °C
Puertos Ethernet LAN (RJ-45)	1	Intervalo de humedad relativa para funcionamiento	10 - 90%
Versión PCI	2.0	Sustentabilidad	
Red		Certificados de sustentabilidad	RoHS
Rango máximo de transferencia de datos *	10000 Mbit/s	Peso y dimensiones	
Estándares de red *	IEEE 802.1Q, IEEE 802.3ab, IEEE 802.3an, IEEE 802.3az, IEEE 802.3bz, IEEE 802.3u	Ancho	21 mm
Ethernet	✓	Profundidad	122 mm
Tipo de interfaz ethernet	10 Gigabit Ethernet	Altura	81 mm
Ethernet LAN, velocidad de transferencia de datos	10,100,1000,1200,2500,5000,10000 Mbit/s	Peso	65.2 g
Tecnología de cableado	10GBASE-T	Empaquetado de datos	
Diseño		Soporte de bajo perfil	✓
Interno *	✓	Detalles técnicos	
Circuito integrado	Tehuti TN4010	Certificados de conformidad	RoHS
Indicadores LED	Actividad, Enlace, Velocidad	Datos de logística	
Certificación	FCC B, CE	Código de Sistema de Armonización (SA)	85176990
		Otras características	
		Guía de configuración rápida	✓

Requisitos del sistema

Sistemas operativos Windows soportados	Windows 10, Windows 10 Education, Windows 10 Education x64, Windows 10 Enterprise, Windows 10 Enterprise x64, Windows 10 Home, Windows 10 Home x64, Windows 10 IOT Core, Windows 10 Pro, Windows 10 Pro x64, Windows 7 Enterprise, Windows 7 Enterprise x64, Windows 7 Home Basic, Windows 7 Home Basic x64, Windows 7 Home Premium, Windows 7 Home Premium x64, Windows 7 Professional, Windows 7 Professional x64, Windows 7 Starter, Windows 7 Starter x64, Windows 7 Ultimate, Windows 7 Ultimate x64, Windows 8, Windows 8 Enterprise, Windows 8 Enterprise x64, Windows 8 Pro, Windows 8 Pro x64, Windows 8 x64, Windows 8.1, Windows 8.1 Enterprise, Windows 8.1 Enterprise x64, Windows 8.1 Pro, Windows 8.1 Pro x64, Windows 8.1 x64
Sistemas operativos Mac soportados	Mac OS X 10.10 Yosemite, Mac OS X 10.11 El Capitan, Mac OS X 10.12 Sierra



0766623507950



766623507950

Disclaimer. The information published here (the "Information") is based on sources that can be considered reliable, typically the manufacturer, but this Information is provided "AS IS" and without guarantee of correctness or completeness. The Information is only indicative and can be changed at any time without notification. No rights can be based on the Information. Suppliers or aggregators of this Information do not accept any liability with regard to the content of (web)pages and other documents, including its Information. The publisher of the Information can not be held liable for the content of 3rd party websites that are linking this Information or are linked to from this Information. You as the User of the Information are solely responsible for the choice and usage of this Information. You are not entitled to transfer, copy or otherwise multiply or distribute the Information. You are obliged to follow the directions of the copyright owner(s) with regard to the use of the Information. Exclusively Dutch law is applicable. With regard to price and stock data on the site, the publisher followed a number of starting points, which are not necessarily relevant for your private or business circumstances. Therefore, the price and stock data are only indicative and are subject to changes. You are personally responsible for the way you use and apply this information. As a user of the Information or sites or documents in which this Information is included, you will adhere to standard fair use including avoidance of spamming, ripping, intellectual-property violations, privacy violations, and any other illegal activity.