



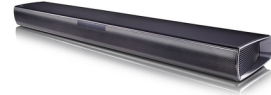
LG SJ2 altavoz para barra de sonido 2.1 canales 160 W

Marca : LG

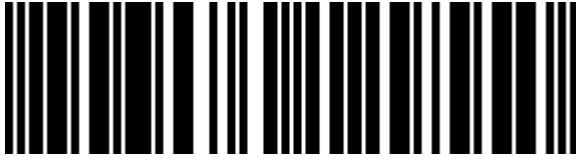
Código del producto: SJ2

Nombre del producto : SJ2

LG SJ2. Canales de salida de audio: 2.1 canales, Potencia estimada RMS: 160 W, Decodificadores incorporados: Dolby Digital. Potencia de la barra de sonido del altavoz RMS: 60 W, Diámetro del tweeter: 10 cm. Potencia RMS de subwoofer: 100 W. Formatos de audio soportados: LPCM, MP3, WMA. Tecnología de conectividad: Inalámbrico y alámbrico



Audio		Control de energía	
Canales de salida de audio *	2.1 canales	Voltaje de entrada AC	100-240 V
Potencia estimada RMS *	160 W	Frecuencia de entrada AC	50 - 60 Hz
Decodificadores incorporados	Dolby Digital	Consumo de energía (inactivo)	0.5 W
Barra de sonido del altavoz		Peso y dimensiones	
Potencia de la barra de sonido del altavoz RMS *	60 W	Ancho de subwoofer	17 cm
Diámetro del tweeter	10 cm	Largo del subwoofer	20.4 cm
Subwoofer		Alto del subwoofer	30 cm
Subwoofer incluido *	✓	Dimensiones de unidad principal (L x A x A)	660 x 99 x 55 mm
Potencia RMS de subwoofer	100 W	Contenido del empaque	
Características		Receptor incluido	✗
Radio FM	✗	Control remoto incluido	✓
Formatos de audio soportados	LPCM, MP3, WMA	Pilas incluidas	✓
Temporizador de apagado	✓	Datos de logística	
Puertos e Interfaces		Código de Sistema de Armonización (SA)	85182200
Tecnología de conectividad *	Inalámbrico y alámbrico	Otras características	
Bluetooth *	✓	Diámetro del controlador del subwoofer (imperial)	13.3 cm (5.25")
Audio digital, entrada óptica	1	Manual	✓



8806084129550

Disclaimer. The information published here (the "Information") is based on sources that can be considered reliable, typically the manufacturer, but this Information is provided "AS IS" and without guarantee of correctness or completeness. The Information is only indicative and can be changed at any time without notification. No rights can be based on the Information. Suppliers or aggregators of this Information do not accept any liability with regard to the content of (web)pages and other documents, including its Information. The publisher of the Information can not be held liable for the content of 3rd party websites that are linking this Information or are linked to from this Information. You as the User of the Information are solely responsible for the choice and usage of this Information. You are not entitled to transfer, copy or otherwise multiply or distribute the Information. You are obliged to follow the directions of the copyright owner(s) with regard to the use of the Information. Exclusively Dutch law is applicable. With regard to price and stock data on the site, the publisher followed a number of starting points, which are not necessarily relevant for your private or business circumstances. Therefore, the price and stock data are only indicative and are subject to changes. You are personally responsible for the way you use and apply this information. As a user of the Information or sites or documents in which this Information is included, you will adhere to standard fair use including avoidance of spamming, ripping, intellectual-property violations, privacy violations, and any other illegal activity.