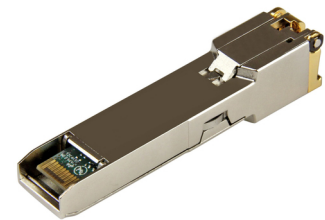


## StarTech.com Módulo Transceptor SFP Compatible con Cisco GLC-T - 1000BASE-T - SFP a RJ45 Cat6 / Cat5e - SFP Ethernet Gigabit de 1Gb - RJ45 - 100m - Cisco Firepower, ASR920, IE2000

Marca : StarTech.com

Código del producto: GLCTST

**Nombre del producto :** Módulo Transceptor SFP Compatible con Cisco GLC-T - 1000BASE-T - SFP a RJ45 Cat6 / Cat5e - SFP Ethernet Gigabit de 1Gb - RJ45 - 100m - Cisco Firepower, ASR920, IE2000



- 100% COMPATIBLE CON CISCO GLC-T: Funciona con conmutadores Cisco como Firepower, ASR920, IE2000, IE4000, ASR9000 y otros
  - ESPECIFICACIONES TÉCNICAS: 1000BASE-T / 1Gbps / Cobre / RJ-45 / Distancias de hasta 100 m
  - PROBADO PARA COMPATIBILIDAD CON DISPOSITIVO OEM ANFITRIÓN: Intercambiable en caliente en enrutadores y conmutadores Cisco
  - FUNCIONA CON CONMUTADORES COMPATIBLES CON MSA: También funciona con los modelos de conmutador Ubiquiti, D-Link, Netgear, Supermicro, TP-Link y otras, las cuales admiten módulos no codificados
  - LA ELECCIÓN DE LOS PROFESIONALES DE LA INFORMÁTICA: Diseñada y fabricada para los profesionales de informática, este módulo SFP está respaldado de por vida (vida útil del módulo, no del conmutador de red), incluyendo asistencia técnica multilingüe gratuita de por vida 24/5
- StarTech.com Módulo Transceptor SFP Compatible con Cisco GLC-T - 1000BASE-T - SFP a RJ45 Cat6 / Cat5e - SFP Ethernet Gigabit de 1Gb - RJ45 - 100m - Cisco Firepower, ASR920, IE2000 (GLCTST)

|  |              |   |             |
|--|--------------|---|-------------|
| <b>Desempeño</b>                               |              | <b>Condiciones ambientales</b>                    |             |
| Tipo de transceptor SFP *                      | Cobre        | Intervalo de humedad relativa para funcionamiento | 30 - 75%    |
| Rango máximo de transferencia de datos *       | 1000 Mbit/s  | <b>Peso y dimensiones</b>                         |             |
| Tipo de interfaz *                             | SFP          | Ancho   | 12 mm       |
| Distancia de transferencia máxima              | 100 m        | Profundidad                                       | 68 mm       |
| Estándares de red                              | IEEE 802.3ab | Altura  | 14 mm       |
| Puertos Ethernet LAN (RJ-45)                   | 1            | Peso  | 25 g        |
| Auto MDI / MDI-X                               | ✓            | <b>Empaquetado de datos</b>                       |             |
| Monitorización de Diagnósticos Digitales (DDM) | ✗            | Número de productos incluidos                     | 1 pieza(s)  |
| <b>Características</b>                         |              | Ancho del paquete                                 | 94 mm       |
| Color del producto                             | Plata        | Largo del paquete                                 | 119 mm      |
| Hot-swap                                       | ✓            | Alto del paquete                                  | 33 mm       |
| <b>Control de energía</b>                      |              | Peso del paquete                                  | 95 g        |
| Consumo energético                             | 1.3 W        | <b>Detalles técnicos</b>                          |             |
| <b>Condiciones ambientales</b>                 |              | Certificados de cumplimiento                      | CE, RoHS    |
| Intervalo de temperatura operativa (T-T)       | 0 - 70 °C    | <b>Datos de logística</b>                         |             |
| Intervalo de temperatura de almacenaje         | -40 - 85 °C  | Largo de la caja principal                        | 254 mm      |
|  |              | Longitud de la caja principal                     | 307 mm      |
|  |              | Código de Sistema de Armonización (SA)            | 85369010    |
|  |              | Alto de la caja principal                         | 200 mm      |
|  |              | Cantidad por caja principal                       | 36 pieza(s) |



0065030864299



065030864299

Disclaimer. The information published here (the "Information") is based on sources that can be considered reliable, typically the manufacturer, but this Information is provided "AS IS" and without guarantee of correctness or completeness. The Information is only indicative and can be changed at any time without notification. No rights can be based on the Information. Suppliers or aggregators of this Information do not accept any liability with regard to the content of (web)pages and other documents, including its Information. The publisher of the Information can not be held liable for the content of 3rd party websites that are linking this Information or are linked to from this Information. You as the User of the Information are solely responsible for the choice and usage of this Information. You are not entitled to transfer, copy or otherwise multiply or distribute the Information. You are obliged to follow the directions of the copyright owner(s) with regard to the use of the Information. Exclusively Dutch law is applicable. With regard to price and stock data on the site, the publisher followed a number of starting points, which are not necessarily relevant for your private or business circumstances. Therefore, the price and stock data are only indicative and are subject to changes. You are personally responsible for the way you use and apply this information. As a user of the Information or sites or documents in which this Information is included, you will adhere to standard fair use including avoidance of spamming, ripping, intellectual-property violations, privacy violations, and any other illegal activity.

Publication date: 21-AUG-2024. Prints or copies of Information are only valid on the printed Publication date