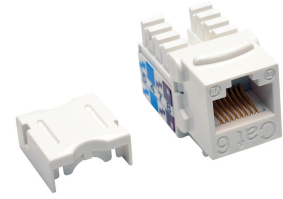


## Tripp Lite N238-025-WH Enchufe Keystone de inserción a presión tipo 110 Cat6 / Cat5e - Blanco, Paquete de 25, TAA

**Marca :** Tripp Lite

**Código del producto:** N238-025-WH

**Nombre del producto :** N238-025-WH Enchufe Keystone de inserción a presión tipo 110 Cat6 / Cat5e - Blanco, Paquete de 25, TAA



Enchufe Keystone de inserción a presión tipo 110 Cat6 / Cat5e - Blanco, Paquete de 25, TAA

Tripp Lite N238-025-WH Enchufe Keystone de inserción a presión tipo 110 Cat6 / Cat5e - Blanco, Paquete de 25, TAA:

Los Conectores Keystone de Presión Estilo 110 Cat6/Cat5e de Tripp Lite proporcionan flexibilidad máxima para cualquier entorno de UTP Ethernet. Ideal para entornos de cableado Cat5e, el conector cumple también con la Prueba de Identificación de Canal/Enlace Permanente ANSI/TIA/EIA-568-B.2-1 certificada por UL para instalaciones con cableado Categoría 6. La exclusiva construcción patentada de tarjeta de circuito impreso está diseñada para alcanzar el desempeño de CAT6 250Mhz y es completamente compatible con las especificaciones de hardware de conexión EIA/TIA CAT6. Gracias a su compacto gabinete, se adapta a cualquier placa frontal, caja de salida o panel. Cuenta además con etiquetado codificado con doble color para diagramas de cableado 568A y 568B (258A)

Cable sólido UTP Cat6 calibre 22-24 AWG

Características		Datos de logística	
Cantidad de puertos	1	Cantidad por caja principal	10 pieza(s)
Tipo de cable	Cat6/Cat5e	Largo de la caja principal	508 mm
Conexión del cable	RJ-45	Longitud de la caja principal	25.4 mm
Color del producto	Blanco	Alto de la caja principal	405.9 mm
<b>Empaquetado de datos</b>		Peso de la caja principal	2.25 kg
Ancho del paquete	199.9 mm	País de origen	Taiwan
Largo del paquete	12.7 mm	Funda principal externa GTN (EAN/UPC)	10037332187861
Alto del paquete	178.1 mm		
Peso del paquete	220 g		



0037332187864



037332187864

Disclaimer. The information published here (the "Information") is based on sources that can be considered reliable, typically the manufacturer, but this Information is provided "AS IS" and without guarantee of correctness or completeness. The Information is only indicative and can be changed at any time without notification. No rights can be based on the Information. Suppliers or aggregators of this Information do not accept any liability with regard to the content of (web)pages and other documents, including its Information. The publisher of the Information can not be held liable for the content of 3rd party websites that are linking this Information or are linked to from this Information. You as the User of the Information are solely responsible for the choice and usage of this Information. You are not entitled to transfer, copy or otherwise multiply or distribute the Information. You are obliged to follow the directions of the copyright owner(s) with regard to the use of the Information. Exclusively Dutch law is applicable. With regard to price and stock data on the site, the publisher followed a number of starting points, which are not necessarily relevant for your private or business circumstances. Therefore, the price and stock data are only indicative and are subject to changes. You are personally responsible for the way you use and apply this information. As a user of the Information or sites or documents in which this Information is included, you will adhere to standard fair use including avoidance of spamming, ripping, intellectual-property violations, privacy violations, and any other illegal activity.

Publication date: 27-AUG-2024. Prints or copies of Information are only valid on the printed Publication date