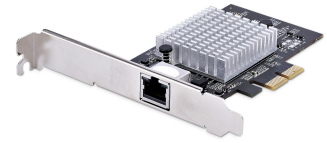


StarTech.com Tarjeta PCIe Adaptadora de Red de 1 Puerto RJ45 10Gb para PC o Servidor, Tarjeta PCI Express Ethernet de 6 Velocidades Compatible con Tramas Jumbo, 10GBASE-T/NBASE-T

Marca : StarTech.com

Código del producto:
ST10GSPEXNB2



Nombre del producto : Tarjeta PCIe Adaptadora de Red de 1 Puerto RJ45 10Gb para PC o Servidor, Tarjeta PCI Express Ethernet de 6 Velocidades Compatible con Tramas Jumbo, 10GBASE-T/NBASE-T

StarTech.com Tarjeta PCIe Adaptadora de Red de 1 Puerto RJ45 10Gb para PC o Servidor, Tarjeta PCI Express Ethernet de 6 Velocidades Compatible con Tramas Jumbo, 10GBASE-T/NBASE-T (ST10GSPEXNB2)

StarTech.com Tarjeta PCIe Adaptadora de Red de 1 Puerto RJ45 10Gb para PC o Servidor, Tarjeta PCI Express Ethernet de 6 Velocidades Compatible con Tramas Jumbo, 10GBASE-T/NBASE-T. Interno. Tecnología de conectividad: Alámbrico, Interfaz de host: PCIe, Interfaz: Ethernet. Rango máximo de transferencia de datos: 10000 Mbit/s. Color del producto: Negro



Puertos e Interfaces		Requisitos del sistema	
Tecnología de conectividad *	Alámbrico	Sistemas operativos Windows soportados	Windows 10, Windows 10 Education, Windows 10 Education x64, Windows 10 Enterprise, Windows 10 Enterprise x64, Windows 10 Home, Windows 10 Home x64, Windows 10 IoT Core, Windows 10 IoT Enterprise, Windows 10 Pro, Windows 10 Pro x64, Windows 10 x64, Windows 11, Windows 11 x64, Windows 8, Windows 8 Enterprise, Windows 8 Enterprise x64, Windows 8 Pro, Windows 8 Pro x64, Windows 8 x64
Interfaz de host *	PCIe		
Interfaz *	Ethernet		
Puertos Ethernet LAN (RJ-45)	1		
Versión PCI	3.0		
Forma de factura de tarjeta PCI	Altura completa (bajo perfil)		
Red		Sistemas operativos Linux soportados	
Rango máximo de transferencia de datos *	10000 Mbit/s		✓
Estándares de red *	IEEE 1588, IEEE 802.1Q, IEEE 802.3ab, IEEE 802.3an, IEEE 802.3az, IEEE 802.3bz, IEEE 802.3i, IEEE 802.3u		
Ethernet	✓		
Tipo de interfaz ethernet	2.5 Gigabit Ethernet, 5 Gigabit Ethernet, 10 Gigabit Ethernet, Ethernet rápido, Gigabit Ethernet		
Ethernet LAN, velocidad de transferencia de datos	10,100,1000,2500,5000,10000 Mbit/s		
Tecnología de cableado	10GBase-T		
IEEE Auto MDIX	✓		
Bidireccional completo (Full duplex)	✓		
Soporte Jumbo Frames	✓		
Marcos jumbo	16000		
Diseño		Condiciones ambientales	
Componente para *	PC	Intervalo de temperatura operativa (T-T)	0 - 60 °C
Color del producto	Negro	Intervalo de temperatura de almacenaje	-10 - 70 °C
Interno *	✓		
Indicadores LED	✓		
		Peso y dimensiones	
		Ancho	107 mm
		Profundidad	121 mm
		Altura	22 mm
		Peso	70 g
		Empaquetado de datos	
		Ancho del paquete	210 mm
		Largo del paquete	145 mm
		Alto del paquete	35 mm
		Peso del paquete	120 g
		Contenido del empaque	
		Soportes de montaje incluidos	✓
		Guía de instalación rápida	✓

Datos de logística

Largo de la caja principal	445 mm
Longitud de la caja principal	375 mm
Alto de la caja principal	320 mm
Cantidad por caja principal	40 pieza(s)



0065030897549



065030897549

Disclaimer. The information published here (the "Information") is based on sources that can be considered reliable, typically the manufacturer, but this Information is provided "AS IS" and without guarantee of correctness or completeness. The Information is only indicative and can be changed at any time without notification. No rights can be based on the Information. Suppliers or aggregators of this Information do not accept any liability with regard to the content of (web)pages and other documents, including its Information. The publisher of the Information can not be held liable for the content of 3rd party websites that are linking this Information or are linked to from this Information. You as the User of the Information are solely responsible for the choice and usage of this Information. You are not entitled to transfer, copy or otherwise multiply or distribute the Information. You are obliged to follow the directions of the copyright owner(s) with regard to the use of the Information. Exclusively Dutch law is applicable. With regard to price and stock data on the site, the publisher followed a number of starting points, which are not necessarily relevant for your private or business circumstances. Therefore, the price and stock data are only indicative and are subject to changes. You are personally responsible for the way you use and apply this information. As a user of the Information or sites or documents in which this Information is included, you will adhere to standard fair use including avoidance of spamming, ripping, intellectual-property violations, privacy violations, and any other illegal activity.

Publication date: 28-AUG-2024. Prints or copies of Information are only valid on the printed Publication date