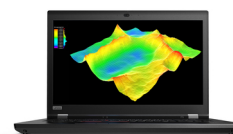




## Lenovo ThinkPad P73 Intel® Core™ i7 i7-9850H Mobile workstation 43.9 cm (17.3") Full HD 16 GB DDR4-SDRAM 2.26 TB HDD+SSD NVIDIA Quadro RTX 3000 Wi-Fi 6 (802.11ax) Windows 10 Home Black



**Brand :** Lenovo

**Product family:** ThinkPad

**Product code:** 20QRA003CD

**Product name :** P73

- Windows 10 Home 64-bit
- Intel Core i7-9850H (12MB Cache, 2.6GHz)
- 43.9 cm (17.3") Full HD 1920 x 1080 IPS, NVIDIA Quadro RTX 3000 (6GB GDDR6)
- 16GB (2666MHz) DDR4-SDRAM & 2000GB HDD, 256GB SSD

Intel Core i7-9850H (12MB Cache, 2.6GHz), 16GB DDR4-SDRAM, 2000GB HDD, 256GB SSD, 43.9 cm (17.3") Full HD 1920 x 1080 IPS, Intel UHD Graphics 630, NVIDIA Quadro RTX 3000 (6GB GDDR6), LAN, WLAN, Bluetooth, Webcam, Windows 10 Home 64-bit

Lenovo ThinkPad P73. Product type: Mobile workstation, Form factor: Clamshell. Processor family: Intel® Core™ i7, Processor: i7-9850H, Processor frequency: 2.6 GHz. Display diagonal: 43.9 cm (17.3"), HD type: Full HD, Display resolution: 1920 x 1080 pixels. Internal memory: 16 GB, Internal memory type: DDR4-SDRAM. Total storage capacity: 2.26 TB, Storage media: HDD+SSD. On-board graphics card model: Intel® UHD Graphics 630. Operating system installed: Windows 10 Home. Product colour: Black



Design		Network	
Product type *	Mobile workstation	Bluetooth	✓
Product colour *	Black	Bluetooth version	5.0
Form factor *	Clamshell	WWAN	Not installed
Display		Ports & interfaces	
Display diagonal *	43.9 cm (17.3")	USB 3.2 Gen 1 (3.1 Gen 1) Type-A ports quantity *	3
Display resolution *	1920 x 1080 pixels	USB 3.2 Gen 1 (3.1 Gen 1) Type-C ports quantity *	1
Touchscreen *	✗	USB 3.2 Gen 2 (3.1 Gen 2) Type-C ports quantity	2
HD type	Full HD	Ethernet LAN (RJ-45) ports	1
Panel type	IPS	HDMI ports quantity *	1
LED backlight	✓	HDMI version	2.0
Native aspect ratio	16:9	Combo headphone/mic port	✓
Display brightness	300 cd/m²	USB Type-C DisplayPort Alternate Mode	✓
Dual-screen	✗	USB Sleep-and-Charge	✓
Contrast ratio (typical)	700:1	USB Sleep-and-Charge ports	1
Processor		Keyboard	
Processor manufacturer *	Intel	Pointing device	ThinkPad UltraNav
Processor family *	Intel® Core™ i7	Numeric keypad *	✓
Processor generation	9th gen Intel® Core™ i7	Keyboard backlight	✓
Processor *	i7-9850H	Spill-resistant keyboard	✓
Processor number of cores	6	Windows keys	✓
Processor threads	12	Software	
Processor boost frequency	4.6 GHz	Operating system architecture	64-bit
Processor frequency *	2.6 GHz	Operating system installed *	Windows 10 Home
System bus data transfer rate	8 GT/s	Processor special features	
Processor cache	12 MB	Intel My WiFi Technology	✓
Processor socket	BGA 1440	Intel Identity Protection Technology	✓
Processor lithography	14 nm	Intel Hyper-Threading Technology	✓
Processor operating modes	64-bit	Intel Turbo Boost Technology	2.0
Processor codename	Coffee Lake	Enhanced Intel SpeedStep Technology	✓
Thermal Design Power (TDP)	45 W		
Configurable TDP-down	35 W		
Tjunction	100 °C		
Maximum number of PCI Express lanes	16		
PCI Express slots version	3.0		

Processor		Processor special features	
PCI Express configurations	1x16, 2x8, 1x8+2x4	Intel Clear Video HD Technology	✓
Memory		Intel Clear Video Technology	✓
Internal memory *	16 GB	Intel® InTru™ 3D Technology	✓
Internal memory type	DDR4-SDRAM	Intel® Quick Sync Video Technology	✓
Memory clock speed	2666 MHz	Intel Flex Memory Access	✓
Memory form factor	SO-DIMM	Intel AES New Instructions	✓
Memory slots	4x SO-DIMM	Intel Trusted Execution Technology	✓
Memory, maximum *	128 GB	Intel VT-x with Extended Page Tables (EPT)	✓
ECC	✗	Intel® Secure Key	✓
Storage		Intel TSX-NI	✓
Total storage capacity *	2.26 TB	Intel Stable Image Platform Program (SIPP)	✓
Storage media *	HDD+SSD	Intel® OS Guard	✓
Total HDDs capacity	2 TB	Intel Software Guard Extensions (Intel SGX)	✓
Number of HDDs installed	1	Intel 64	✓
Hard drive capacity	2 TB	Execute Disable Bit	✓
Hard drive interface	SATA III	Idle States	✓
Total SSDs capacity	256 GB	Thermal Monitoring Technologies	✓
Number of SSDs installed	1	Processor package size	42 x 28 mm
Solid-state drive capacity	256 GB	Supported instruction sets	SSE4.1, SSE4.2, AVX 2.0
Solid-state drive interfaces	PCI Express	CPU configuration (max)	1
SSD form factor	M.2	Embedded options available	✗
Optical drive *	✗	Intel Virtualization Technology for Directed I/O (VT-d)	✓
Card reader integrated	✓	Intel Virtualization Technology (VT-x)	✓
Compatible memory cards	MMC, SD, SDHC, SDXC	Processor ARK ID	191047
Graphics		Battery	
Discrete graphics card model *	NVIDIA Quadro RTX 3000	Battery technology	Lithium Polymer (LiPo)
Discrete graphics card memory	6 GB	Battery capacity *	99 Wh
Discrete graphics memory type	GDDR6	Battery life (max)	17.2 h
On-board graphics card *	✓	Fast charging	✓
Discrete graphics card *	✓	Power	
On-board graphics card model *	Intel® UHD Graphics 630	AC adapter power	230 W
On-board graphics card base frequency	350 MHz	DC-in jack	✓
On-board graphics card dynamic frequency (max)	1150 MHz	USB Power Delivery (USB PD)	✓
Maximum on-board graphics card memory	64 GB	Security	
On-board graphics card DirectX version	12.0	Cable lock slot	✓
On-board graphics card OpenGL version	4.5	Fingerprint reader	✓
On-board graphics card ID	0x3E9B	Smart card reader	✓
Audio		Trusted Platform Module (TPM)	✓
Audio system	Dolby Atmos	Password protection	✓
Number of built-in speakers	2	Password protection type	HDD, Power on, Supervisor
Speaker power	2 W	Certificates	
Built-in subwoofer	✗	Compliance certificates	RoHS
Built-in microphone	✓	Certification	MIL-STD-810G
Built-in audio decoders	Dolby Atmos	Sustainability	
Camera		Sustainability certificates	EPEAT Silver, ENERGY STAR
Front camera	✓	Weight & dimensions	
Front camera signal format	720p	Width	416 mm
Front camera HD type	HD	Depth	281 mm
Infrared (IR) camera	✓	Height (front)	2.59 cm
Privacy camera	✓	Height (rear)	3.1 cm
Privacy type	Privacy shutter		
Auto focus	✗		

Network		Weight & dimensions	
Wi-Fi	✓	Weight *	3.4 kg
Top Wi-Fi standard *	Wi-Fi 6 (802.11ax)	Packaging content	
Wi-Fi standards	802.11a, 802.11b, 802.11g, Wi-Fi 4 (802.11n), Wi-Fi 5 (802.11ac), Wi-Fi 6 (802.11ax)	AC adapter included *	✓
Mobile network connection *		Other features	
Antenna type	2x2	3D compatibility	✗
WLAN controller model	Intel Wi-Fi 6 AX200	Maximum internal memory (64-bit)	128 GB
Ethernet LAN connection	✓		
Ethernet LAN data rates	10,100,1000 Mbit/s		

## Catalog Object Cloud



Disclaimer. The information published here (the "Information") is based on sources that can be considered reliable, typically the manufacturer, but this Information is provided "AS IS" and without guarantee of correctness or completeness. The Information is only indicative and can be changed at any time without notification. No rights can be based on the Information. Suppliers or aggregators of this Information do not accept any liability with regard to the content of (web)pages and other documents, including its Information. The publisher of the Information can not be held liable for the content of 3rd party websites that are linking this Information or are linked to from this Information. You as the User of the Information are solely responsible for the choice and usage of this Information. You are not entitled to transfer, copy or otherwise multiply or distribute the Information. You are obliged to follow the directions of the copyright owner(s) with regard to the use of the Information. Exclusively Dutch law is applicable. With regard to price and stock data on the site, the publisher followed a number of starting points, which are not necessarily relevant for your private or business circumstances. Therefore, the price and stock data are only indicative and are subject to changes. You are personally responsible for the way you use and apply this information. As a user of the Information or sites or documents in which this Information is included, you will adhere to standard fair use including avoidance of spamming, ripping, intellectual-property violations, privacy violations, and any other illegal activity.