



DELL KM5221W-WH keyboard Mouse included RF Wireless QWERTY UK International White

Brand : DELL

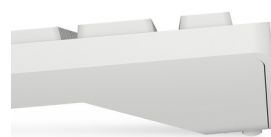
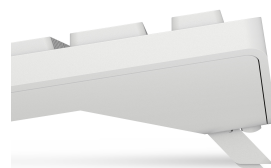
Product code: KM5221W-WH-UK

Product name : KM5221W-WH

Wireless Keyboard and Mouse - KM5221W - UK (QWERTY) - White

DELL KM5221W-WH keyboard Mouse included RF Wireless QWERTY UK International White:

Combining a discreetly powerful keyboard with an expertly designed mouse, the Dell Pro Wireless Keyboard and Mouse combo enhances your productivity. Powered by one of the industry's leading battery lives of up to 36 months, this combo is built to last.
DELL KM5221W-WH. Keyboard form factor: Full-size (100%). Keyboard style: Straight. Device interface: RF Wireless, Keyboard layout: QWERTY, Recommended usage: Office. Product colour: White. Mouse included



Keyboard		Mouse	
Recommended usage *	Office	Buttons type	Pressed buttons
Device interface *	RF Wireless	Scroll	✓
Keyboard layout *	QWERTY	Scroll type	Wheel
Keyboard language *	UK International	Scrolling directions	Vertical
Pointing device *	✗	Mouse battery type	AA
Keyboard form factor *	Full-size (100%)	Number of batteries (mouse)	1
Numeric keypad *	✓	System requirements	
Hot keys	✓		
Number of hot keys	12		
Programmable hot keys	✓		
Frequency band	2.4 GHz		
Design		Windows operating systems supported Mac operating systems supported ✓ Mobile operating systems supported Android Other operating systems supported ChromeOS, DOS	
Backlight *	✗		
Keyboard style	Straight		
Ergonomic design	✗		
Wrist rest	✗		
Product colour *	White		
LED indicators	Battery		
Features		Operational conditions	
Wireless range	10 m		
Power			
Power source type *	Battery		
Keyboard battery type	AAA		
Number of batteries (keyboard)	2	Weight & dimensions	
Service life of battery	36 month(s)		
Mouse			
Mouse included *	✓		
Form factor	Ambidextrous		
Movement detection technology	Optical	Keyboard dimensions (WxDxH)	433 x 123 x 34 mm
Movement resolution	1600 DPI	Keyboard weight	400 g
Buttons quantity	3	Mouse dimensions (WxDxH)	115.51 x 61.96 x 38.14 mm
		Mouse weight	91.8 g

Packaging data	
Batteries included	✓
Number of products included *	2 pc(s)
Package width	455 mm
Package depth	138 mm
Package height	72 mm
Package weight	713 g
Package type	Box
Logistics data	
Harmonized System (HS) code	84716060



5397184514429

Disclaimer. The information published here (the "Information") is based on sources that can be considered reliable, typically the manufacturer, but this Information is provided "AS IS" and without guarantee of correctness or completeness. The Information is only indicative and can be changed at any time without notification. No rights can be based on the Information. Suppliers or aggregators of this Information do not accept any liability with regard to the content of (web)pages and other documents, including its Information. The publisher of the Information can not be held liable for the content of 3rd party websites that are linking this Information or are linked to from this Information. You as the User of the Information are solely responsible for the choice and usage of this Information. You are not entitled to transfer, copy or otherwise multiply or distribute the Information. You are obliged to follow the directions of the copyright owner(s) with regard to the use of the Information. Exclusively Dutch law is applicable. With regard to price and stock data on the site, the publisher followed a number of starting points, which are not necessarily relevant for your private or business circumstances. Therefore, the price and stock data are only indicative and are subject to changes. You are personally responsible for the way you use and apply this information. As a user of the Information or sites or documents in which this Information is included, you will adhere to standard fair use including avoidance of spamming, ripping, intellectual-property violations, privacy violations, and any other illegal activity.

Publication date: 02-JUN-2024. Prints or copies of Information are only valid on the printed Publication date