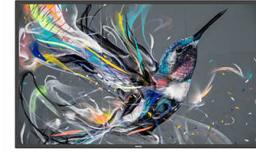


**Philips 50BDL3550Q/00 Signage Display Digital signage flat panel  
125.7 cm (49.5") VA 400 cd/m<sup>2</sup> 4K Ultra HD Black Android 8.0**



**Brand :** Philips

**Product code:** 50BDL3550Q/00

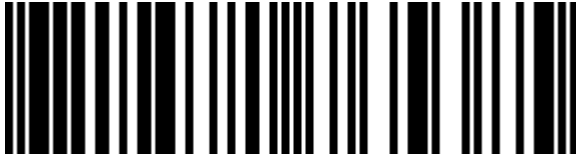
**Product name :** 50BDL3550Q/00

VA, 1.07 Billion, 0.2854 x 0.2854 mm, 16:9, 8 ms, 500000:1, 4000:1, 400 cd/m<sup>2</sup>, 3840 x 2160, 49.5 inch, 125.7 cm

Philips 50BDL3550Q/00. Product design: Digital signage flat panel. Display diagonal: 125.7 cm (49.5"), Display technology: VA, Display resolution: 3840 x 2160 pixels, Display brightness: 400 cd/m<sup>2</sup>, HD type: 4K Ultra HD. Operating system installed: Android 8.0. Product colour: Black



<b>Display</b>		<b>Design</b>	
Display diagonal *	125.7 cm (49.5")	Panel mounting interface	400 x 400 mm
Display technology *	VA	<b>Performance</b>	
Display resolution *	3840 x 2160 pixels	On Screen Display (OSD) languages	Arabic, Simplified Chinese, Traditional Chinese, German, English, Spanish, French, Italian, Japanese, Polish, Russian, Turkish
Display brightness *	400 cd/m <sup>2</sup>	Mean time between failures (MTBF)	50000 h
HD type *	4K Ultra HD	<b>Power</b>	
Native aspect ratio	16:9	Power consumption (typical) *	115 W
Response time	8 ms	Power consumption (standby) *	0.5 W
Contrast ratio (typical)	4000:1	Energy efficiency class (SDR)	G
Contrast ratio (dynamic)	500000:1	Energy consumption (SDR) per 1000 hours	122 kWh
Viewing angle, horizontal	178°	AC input voltage	100-240 V
Viewing angle, vertical	178°	AC input frequency	50-60 Hz
Display number of colours	1.07 billion colours	Energy efficiency scale	A to G
Pixel pitch	0.2854 x 0.2854 mm	<b>Computer system</b>	
Display diagonal (metric)	125.7 cm	Internal memory	2 GB
<b>Ports &amp; interfaces</b>		Internal storage capacity	16 GB
HDMI ports quantity *	2	Operating system installed	Android 8.0
HDMI version	2.0	Video formats supported	H.263, H.264, H.265, MPEG, VP8
HDMI input ports quantity	2	Audio formats supported	AAC, HE-AAC
DVI port *	✓	Image formats supported	BMP, JPEG, PNG
DVI-I ports quantity	1	<b>Weight &amp; dimensions</b>	
USB port *	✓	Display width	1128.4 mm
USB ports quantity	2	Display depth	63.5 mm
USB version	2.0	Display height	649 mm
Ethernet LAN *	✓	Display weight	12.8 kg
Ethernet LAN (RJ-45) ports	1	<b>Packaging content</b>	
Audio (L/R) in	1	Remote control included	✓
Audio (L/R) out	1	Batteries included	✓
RS-232C	✓	Cables included	AC, IR sensor, USB
Remote (IR) input	1	<b>Operational conditions</b>	
Remote (IR) output	1	Operating temperature (T-T)	0 - 40 °C
<b>Audio</b>		Operating relative humidity (H-H)	20 - 80%
Built-in speaker(s) *	✓	Storage temperature (T-T)	-20 - 60 °C
Number of built-in speakers	2	<b>Logistics data</b>	
RMS rated power	10 W	Harmonized System (HS) code	85285210
<b>Design</b>			
Product design *	Digital signage flat panel		
Placement supported *	Indoor		
Product colour *	Black		
VESA mounting *	✓		



8712581765385

Disclaimer. The information published here (the "Information") is based on sources that can be considered reliable, typically the manufacturer, but this Information is provided "AS IS" and without guarantee of correctness or completeness. The Information is only indicative and can be changed at any time without notification. No rights can be based on the Information. Suppliers or aggregators of this Information do not accept any liability with regard to the content of (web)pages and other documents, including its Information. The publisher of the Information can not be held liable for the content of 3rd party websites that are linking this Information or are linked to from this Information. You as the User of the Information are solely responsible for the choice and usage of this Information. You are not entitled to transfer, copy or otherwise multiply or distribute the Information. You are obliged to follow the directions of the copyright owner(s) with regard to the use of the Information. Exclusively Dutch law is applicable. With regard to price and stock data on the site, the publisher followed a number of starting points, which are not necessarily relevant for your private or business circumstances. Therefore, the price and stock data are only indicative and are subject to changes. You are personally responsible for the way you use and apply this information. As a user of the Information or sites or documents in which this Information is included, you will adhere to standard fair use including avoidance of spamming, ripping, intellectual-property violations, privacy violations, and any other illegal activity.

Publication date: 17-SEP-2024. Prints or copies of Information are only valid on the printed Publication date