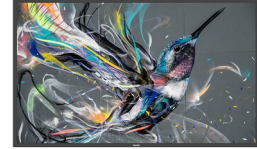
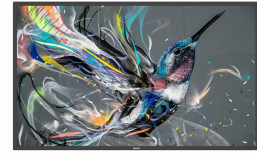


Philips 55BDL3650QE/00 Signage Display Digital signage flat panel 138.7 cm (54.6") Wi-Fi 350 cd/m² 4K Ultra HD Black Built-in processor Android 10



Brand : Philips

Product code: 55BDL3650QE/00

Product name : 55BDL3650QE/00

54.6" 3840 x 2160, 16:9, 350 cd/m², 1200:1, Android 10, 100-240 V, 50/60 Hz, 70 W
 Philips 55BDL3650QE/00. Product design: Digital signage flat panel. Display diagonal: 138.7 cm (54.6"),
 Display resolution: 3840 x 2160 pixels, Display brightness: 350 cd/m², HD type: 4K Ultra HD. Wi-Fi.
 Operating system installed: Android 10. Product colour: Black

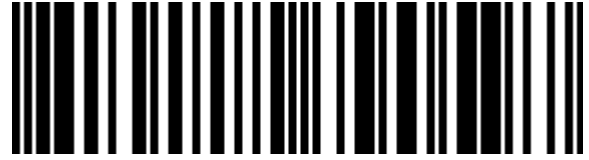


Display		Design	
Panel type	IPS	Panel mounting interface	400 x 400 mm
LED backlight	✓	Bezel width (bottom)	1.39 cm
LED backlighting type	Direct-LED	Bezel width (side)	1.39 cm
Display diagonal *	138.7 cm (54.6")	Bezel width (top)	1.39 cm
Display resolution *	3840 x 2160 pixels	Performance	
Display brightness *	350 cd/m ²	Purpose *	Universal
HD type *	4K Ultra HD	On Screen Display (OSD)	✓
Touchscreen *	✗	On Screen Display (OSD) languages	Arabic, Simplified Chinese, Traditional Chinese, German, English, Spanish, French, Italian, Japanese, Polish, Russian, Turkish
Native aspect ratio	16:9	Open Pluggable Specification (OPS)	✓
Response time	8 ms	Mean time between failures (MTBF)	30000 h
Contrast ratio (typical)	1200:1	Power	
Contrast ratio (dynamic)	500000:1	Power consumption (typical) *	70 W
Viewing angle, horizontal	178°	Power consumption (standby) *	0.5 W
Viewing angle, vertical	178°	Power consumption (max)	120 W
Display number of colours	1.06 billion colours	Energy efficiency class (SDR)	D
Pixel pitch	0.2854 x 0.2854 mm	AC input voltage	100 - 240 V
Display diagonal (metric)	125.7 cm	AC input frequency	50 - 60 Hz
Ports & interfaces		Computer system	
HDMI ports quantity *	2	Computer system *	✗
HDMI version	2.0	Built-in processor *	✓
DVI port *	✓	Operating system installed	Android 10
DVI-I ports quantity	1	Video formats supported	H.263, H.264, H.265, MPEG1, MPEG2, VP8, VP9
USB port *	✓	Audio formats supported	AAC, HE-AAC, MPEG
USB ports quantity	4	Image formats supported	BMP, JPEG, PNG
USB version	2.0	Weight & dimensions	
USB 2.0 Type-B ports quantity	2	Display width	1241.8 mm
USB 3.2 Gen 1 (3.1 Gen 1) Type-A ports quantity	2	Display depth	63.6 mm
Ethernet LAN *	✓	Display height	712.6 mm
Ethernet LAN (RJ-45) ports	1	Display weight	17.2 kg
Wi-Fi *	✓		
RS-232 interface	✓		
Infrared data port	✓		
Card reader integrated	✓		
Compatible memory cards	MicroSD (TransFlash)		

Audio		Packaging content	
Built-in speaker(s) *	✓	Cables included	AC, RS-232
Number of built-in speakers	2	Operational conditions	
RMS rated power	20 W	Operating temperature (T-T)	0 - 40 °C
Design		Operating relative humidity (H-H)	20 - 80%
Product design *	Digital signage flat panel	Storage temperature (T-T)	-20 - 60 °C
Placement supported *	Indoor	Storage relative humidity (H-H)	5 - 95%
Orientation	Horizontal/Vertical	Features	
Product colour *	Black	Tiled bezel width	1.5 cm
Screen shape	Flat	Technical details	
VESA mounting *	✓	Internal memory	3000 MB
		Warranty period	3 year(s)
		Compliance certificates	BSMI, CB, CE, ETL, Federal Communications Commission (FCC), RoHS, VCCI



8712581801601



0810112790597



810112790597

Disclaimer. The information published here (the "Information") is based on sources that can be considered reliable, typically the manufacturer, but this Information is provided "AS IS" and without guarantee of correctness or completeness. The Information is only indicative and can be changed at any time without notification. No rights can be based on the Information. Suppliers or aggregators of this Information do not accept any liability with regard to the content of (web)pages and other documents, including its Information. The publisher of the Information can not be held liable for the content of 3rd party websites that are linking this Information or are linked to from this Information. You as the User of the Information are solely responsible for the choice and usage of this Information. You are not entitled to transfer, copy or otherwise multiply or distribute the Information. You are obliged to follow the directions of the copyright owner(s) with regard to the use of the Information. Exclusively Dutch law is applicable. With regard to price and stock data on the site, the publisher followed a number of starting points, which are not necessarily relevant for your private or business circumstances. Therefore, the price and stock data are only indicative and are subject to changes. You are personally responsible for the way you use and apply this information. As a user of the Information or sites or documents in which this Information is included, you will adhere to standard fair use including avoidance of spamming, ripping, intellectual-property violations, privacy violations, and any other illegal activity.